

Port Report



FEBRUARY 2022



HISTORIC HIGHWAY PERMIT REQUIRED

Between May 24 and Sept. 5, 2022, a timed-access permit will be required for each personal vehicle driven on the Historic Columbia River Highway from 9 a.m. to 6 p.m. between Vista House and Ainsworth State Park. Improved access timed vehicle permits will be available online for a small processing/administration fee and in person for a limited amount of same-day permits. ODOT estimates these permits to cost no more than \$5. Once you arrive during your designated time slot, you can stay as long as you like, although parking is not guaranteed. Cost of permit is per car, not per person. This program is launching in response to emergency response concerns. Congestion along the Waterfall Corridor means emergency vehicles can't respond quickly. It also means visitors are stuck in traffic waiting for parking spaces to open. The Improved Access Timed Vehicle Access Permit will reduce congestion by limiting the number of vehicles on the corridor at one time. This will allow emergency responders to arrive on scene promptly and reduce time visitors spend sitting in traffic. The permit is not applied to transit, tour or bicycle. You can hop on and off at each attraction, and you won't have to worry about traffic or navigating the winding, narrow highway that was built in the 1910's, when vehicles were a lot smaller. You also have the peace of mind knowing you're not adding to the congestion. It is easier than ever to enjoy your visit to the Waterfall Corridor car-free, which is good for you and the environment, too!

4TH OF JULY VENDORS

The Port of Cascade Locks is seeking vendors to add to the 4th of July Celebration in Marine Park. If you or someone you know has a food and/or beverage cart, is an entertainer or has goods to sell, please call us at 541-374-2405. This event pulls spectators from the region — between 5,000 to 7,000 people to our waterfront park for all day fun in the park with a fireworks show starting at approximately 10pm. Come join us! Vendor space includes option of water and electric hook-ups or dry space.

SEEKING DONATIONS

The Cascade Locks Easter Egg Hunt in Marine Park is scheduled for Saturday, April 16th. Organizers are seeking donations to help make this event memorable for the kids of Cascade Locks. What is needed is individually wrapped candy, plastic easter eggs, toys to stuff in eggs, and prizes. If you would like to make a donation to this event, please contact us at bberge@portofcascadelocks or 541-374-2402.

GORGE WATERFALLS RUN

It's back! After 4 years of the Gorge Waterfalls 50K & 100K being cancelled due to trail conditions following the Eagle Creek Fire, the race is back on. This time, under new leadership and some fresh changes to the old race. The two-day event is set for the 100K race on Saturday, April 2nd and the 50K race on Sunday, April 3rd. Registration is open now until March 27th. To find out more about this event, or register, visit daybreakracing.com/gorge-waterfalls.



The Port of Cascade Locks is a business-friendly engine for economic development



PO Box 307
 427 Portage Road
 Cascade Locks, OR 97014
 541-374-8619
 portofcascadelocks.org

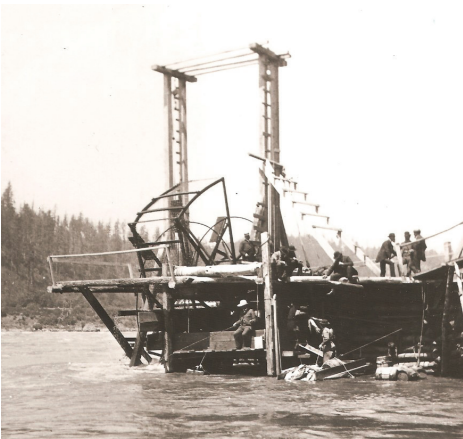
****ECRWSS****
 LOCAL
 POSTAL CUSTOMER

PRSRT STD
 ECRWSS
 U.S. POSTAGE
 PAID
 EDDM RETAIL

BUDGET SESSION

Port staff members are developing the proposed 2022-23 budget. On May 11th, the budget committee consisting of 5 commissioners and 5 citizen volunteers will begin the process of reviewing the proposed budget. This process will typically take multiple public meetings to review, ask detailed questions, and make edits to the proposed budget. The final budget is scheduled to be reviewed and adopted by the Port Commission in regular session on June 16th, 2022. If interested in serving on the Budget Committee, send a letter to:

Port of Cascade Locks
 c/o Sydney Vargas
 PO Box 307
 Cascade Locks, OR 97014



HISTORICAL HIGHLIGHT

Do you ever look out into the Columbia and wonder what the old pilings were for? Some were for canneries, some were for boat construction yards and quarry docks, and many were for fishwheels. Fishwheels were water wheel mechanisms which rotated with the current, scooping fish out of the rapids around the Cascades. At the peak of fishwheel usage, there were 79 fixed fishwheels and many more scow wheels operating along the Columbia River. Early fishwheels were built with log bases and had fixed heights and positions. This meant that they could only catch fish when the water level was just right to operate them. Scow fishwheels were a later improvement. These fishwheels were attached to boats that could rise and fall with the level of the river, move, and operate year-round.

Fishwheels were too efficient at catching fish. The most famous fishwheel, Seuferts' No. 5, boasted a record of 209 tons of salmon caught in a single season. There were several fishwheels in operation that caught as many fish in 24 hours as the average gillnet fisher could catch in 4 years. Fishwheels were outlawed in Oregon in 1926 and Washington in 1934, for reasons relating to both conservation and economic competition.

Cascade Locks Historical Museum opens for the season on Saturday, March 19. Join us during our new expanded hours, 11am to 5pm. The museum will be open Thursday through Monday, closed on Tuesdays and Wednesdays through October 31. Local admission is \$1, and local students are free.

DATES TO TAKE NOTE OF:

- Mar 1.....Joint POHR/POCL Meeting
- Mar 1..... Economic Dev. Sub-Committee
- Mar 3.....Port Commission
- Mar 15..... Economic Dev. Sub-Committee
- Mar 17.....Port Commission
- Mar 17.....CL Action Team

If you have further questions on meeting times or locations, contact our office at 541-374-8619 or visit portofcascadelocks.org.

HOT JOBS

Accountant

Port of Cascade Locks
<https://portofcascadelocks.org/accountant/>

Multiple Positions Available

Gorges Beer Co.
 Contact jobs@gorgesbeer.com

Finance Officer

City of Cascade Locks
www.cascade-locks.or.us

Hiring Now - Variety of Positions

pFriem Family Brewers
 Apply today!
www.pfriembeer.com/about/careers

Taproom Positions

Thunder Island Brewing
 To apply, visit:
thunderislandbrewing.com/jobs

Now Hiring Caregivers

Person Centered Service, Inc.
 All shifts available
 Starts at \$17-\$19/hour
 Plus Medical Insurance for Full Time
 Contact: 541-993-1379